

SCCM Primary Site Recovery Details Steps

Copyright hiraniconfigmgr.com

Step 1:



Step 2:

System Center Configuration Manager Setup Wizard

Getting Started

Available Setup Options

Setup has not detected an existing installation of site server, site system, or Configuration Manager console on this computer.

☐ Install a Configuration Manager primary site

- ☐ Use typical installation options for a stand-alone primary site
 - Install a Configuration Manager primary site
 - Use default installation path
 - Configure local SQL Server with default settings
 - Enable a local management point for Configuration Manager
 - Enable a local distribution point for Configuration Manager

☐ Install a Configuration Manager central administration site

☐ Upgrade this Configuration Manager site

☒ Recover a site

☐ Perform site maintenance or reset this site

☐ Uninstall this Configuration Manager site

Step 3:

System Center Configuration Manager Setup Wizard

Site Server and Database Recovery Options

You can recover a site server from an existing Configuration Manager backup set or reinstall the site server. If setup has detected an existing site installation on this computer, site server recovery settings are disabled.

☒ Recover this site server using an existing backup

 Example: \\Fileserver\Backupshare\XYZBackup or Z:\Backup\XYZBackup

 Path:

☐ Reinstall this site server

You can recover the site database from an existing Configuration Manager backup set or create a new database for this site. Alternatively, you can specify that the site database was manually recovered by using a different method, or you can skip database recovery when the site database was unaffected by the disaster.

☐ Recover the site database using the backup set at the following location:

 Example: \\Fileserver\Backupshare\XYZBackup or Z:\Backup\XYZBackup

 Path:

☐ Create a new database for this site

☐ Use a site database that has been manually recovered

☒ Skip database recovery (Use this option if the site database was unaffected)

Step 4:

System Center Configuration Manager Setup Wizard

Site Recovery Information

When recovering a central administration site, you have the option to specify a reference primary site to use as the authoritative source of data when you do not have an existing site backup and when conflicts occur between primary sites in the hierarchy. This option is disabled when Setup has detected that you are recovering a primary site.

When recovering a primary site, you have the option to specify the central administration site to which the primary site was previously connected. Leave this setting blank when the primary site was not previously connected to a central administration site. This option is disabled when Setup has detected that you are recovering a central administration site.

Select the type of site that you want to recover:

☐ Recover central administration site

Reference primary site (FQDN): Example: Server1.contoso.com

☒ Recover primary site

Central administration site (FQDN): Example: Server1.contoso.com

< Previous Next > Cancel

Step 5:

System Center Configuration Manager Setup Wizard

Product License Terms

You must accept the License Terms and Privacy Statement to continue installation of System Center Configuration Manager.

[View the License Terms](#)

[View the Privacy Statement](#)

☒ I accept these License Terms and Privacy Statement.

During Setup, Configuration Manager will download and store the following software on the site server and then automatically install the software on the site systems or client computers as required.

[View the Microsoft SQL Server Express License Terms](#)

☒ I accept these License Terms.

[View the Microsoft SQL Server Native Client License Terms](#)

☒ I accept these License Terms.

< Previous Next > Cancel

Step 6:

The screenshot shows the 'Prerequisite Downloads' step of the 'System Center Configuration Manager Setup Wizard'. The window has a blue title bar and a progress bar at the top with five segments, the first of which is filled. The main area contains instructions: 'Setup requires prerequisite files. Setup can automatically download the files to a location that you specify, or you can use files that have been downloaded previously.' There are two radio button options. The first is 'Download required files', which is unselected. Below it is a 'Path:' label, an example text 'Example: \\ServerName\ShareName or C:\Downloads', an empty text box, and a 'Browse...' button. The second option is 'Use previously downloaded files', which is selected. Below it is another 'Path:' label, an example text 'Example: \\ServerName\ShareName or C:\Downloads', a text box containing a partially redacted path ending in 'CD.Latest\redist', and a 'Browse...' button. At the bottom right are three buttons: '< Previous', 'Next >', and 'Cancel'.

System Center Configuration Manager Setup Wizard

Prerequisite Downloads

Setup requires prerequisite files. Setup can automatically download the files to a location that you specify, or you can use files that have been downloaded previously.

☐ Download required files

Example: \\ServerName\ShareName or C:\Downloads

Path: Browse...

☒ Use previously downloaded files

Example: \\ServerName\ShareName or C:\Downloads

Path: CD.Latest\redist Browse...

< Previous Next > Cancel

Step 7

System Center Configuration Manager Setup Wizard

Site and Installation Settings

Specify a site code that uniquely identifies this Configuration Manager site in your hierarchy.

Site code: [Redacted]

Specify a site name that helps to identify the site. Example: Contoso Headquarters Site

Site name: [Redacted]

Note: The site code must be unique in the Configuration Manager hierarchy and cannot be changed after you install the site.

Installation folder: [Redacted] Browse...

Specify whether to install the Configuration Manager console to manage the Configuration Manager site from this computer. You can remotely manage the site when you do not install the Configuration Manager console.

Make sure correct previous installation path selected

☐ Install the Configuration Manager console

< Previous Next > Cancel

Step 8

System Center Configuration Manager Setup Wizard

Site and Installation Settings

Specify a site code that uniquely identifies this Configuration Manager site in your hierarchy.

Site code: [Redacted]

Specify a site name that helps to identify the site. Example: Contoso Headquarters Site

Site name: [Redacted]

Note: The site code must be unique in the Configuration Manager hierarchy and cannot be changed after you install the site.

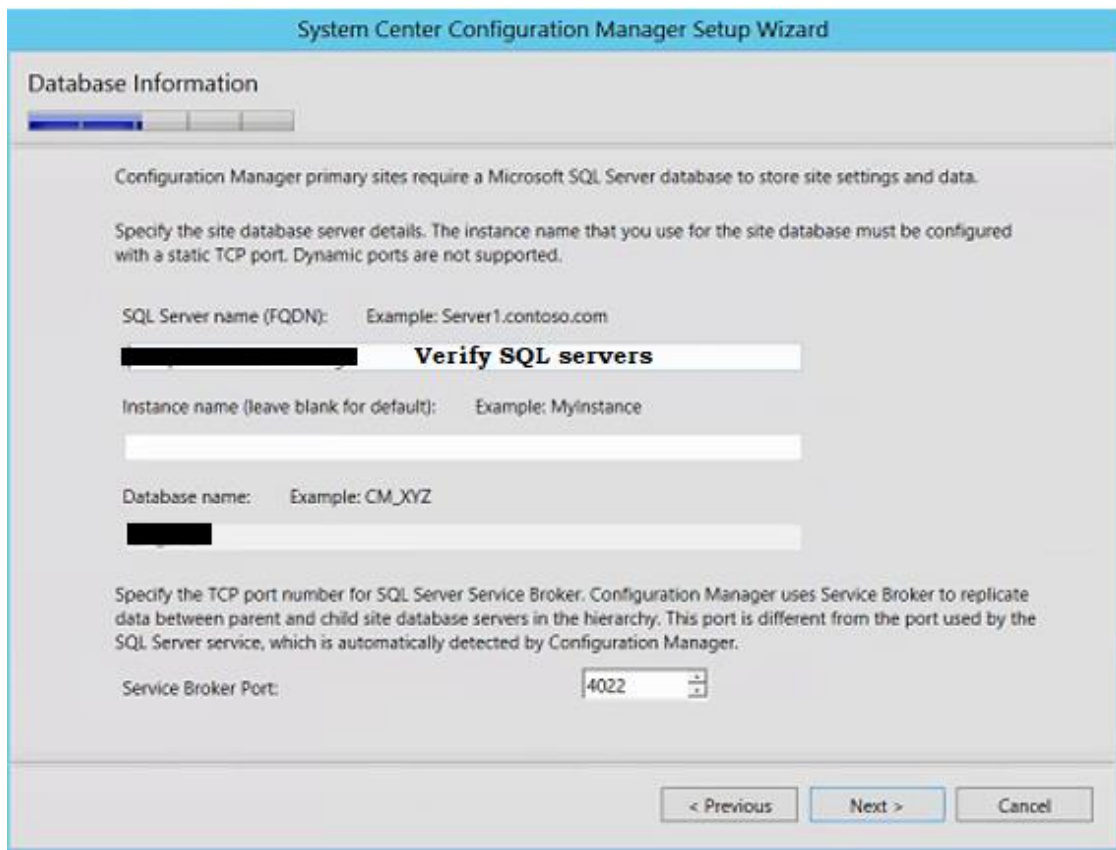
Installation folder: D:\Program Files\Microsoft Configuration Manager Browse...

Specify whether to install the Configuration Manager console to manage the Configuration Manager site from this computer. You can remotely manage the site when you do not install the Configuration Manager console.

☐ Install the Configuration Manager console

< Previous Next > Cancel

Step 9



System Center Configuration Manager Setup Wizard

Database Information

Configuration Manager primary sites require a Microsoft SQL Server database to store site settings and data.

Specify the site database server details. The instance name that you use for the site database must be configured with a static TCP port. Dynamic ports are not supported.

SQL Server name (FQDN): Example: Server1.contoso.com
Verify SQL servers

Instance name (leave blank for default): Example: MyInstance

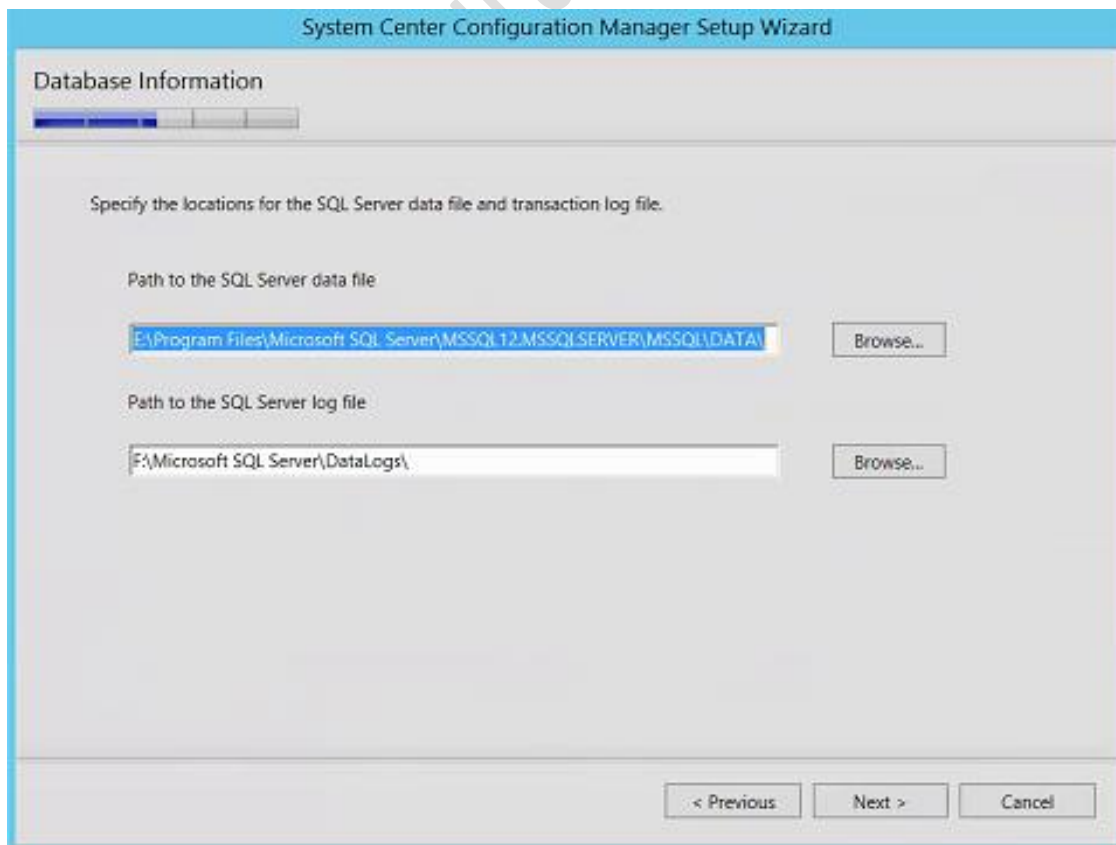
Database name: Example: CM_XYZ

Specify the TCP port number for SQL Server Service Broker. Configuration Manager uses Service Broker to replicate data between parent and child site database servers in the hierarchy. This port is different from the port used by the SQL Server service, which is automatically detected by Configuration Manager.

Service Broker Port: 4022

< Previous Next > Cancel

Step 10



System Center Configuration Manager Setup Wizard

Database Information

Specify the locations for the SQL Server data file and transaction log file.

Path to the SQL Server data file
E:\Program Files\Microsoft SQL Server\MSSQL12.MSSQLSERVER\MSSQL\DATA\ Browse...

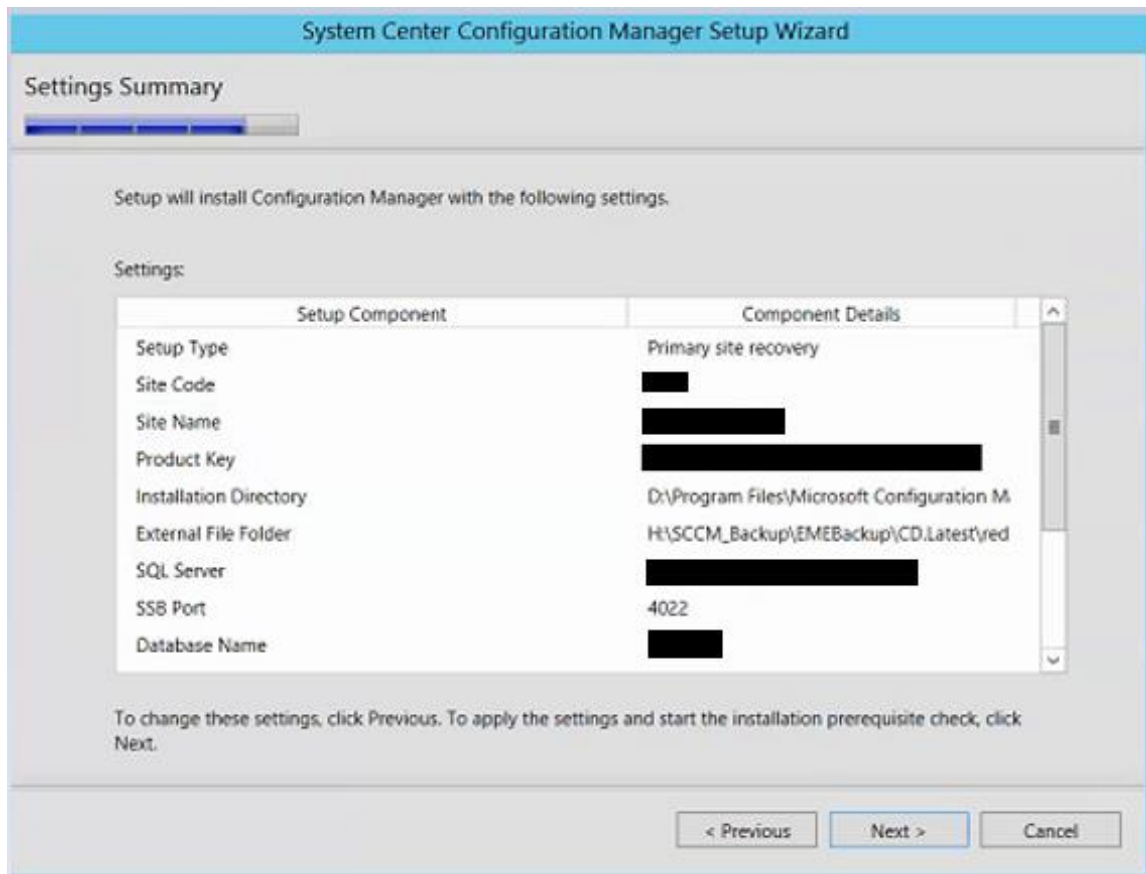
Path to the SQL Server log file
F:\Microsoft SQL Server\DataLogs\ Browse...

< Previous Next > Cancel

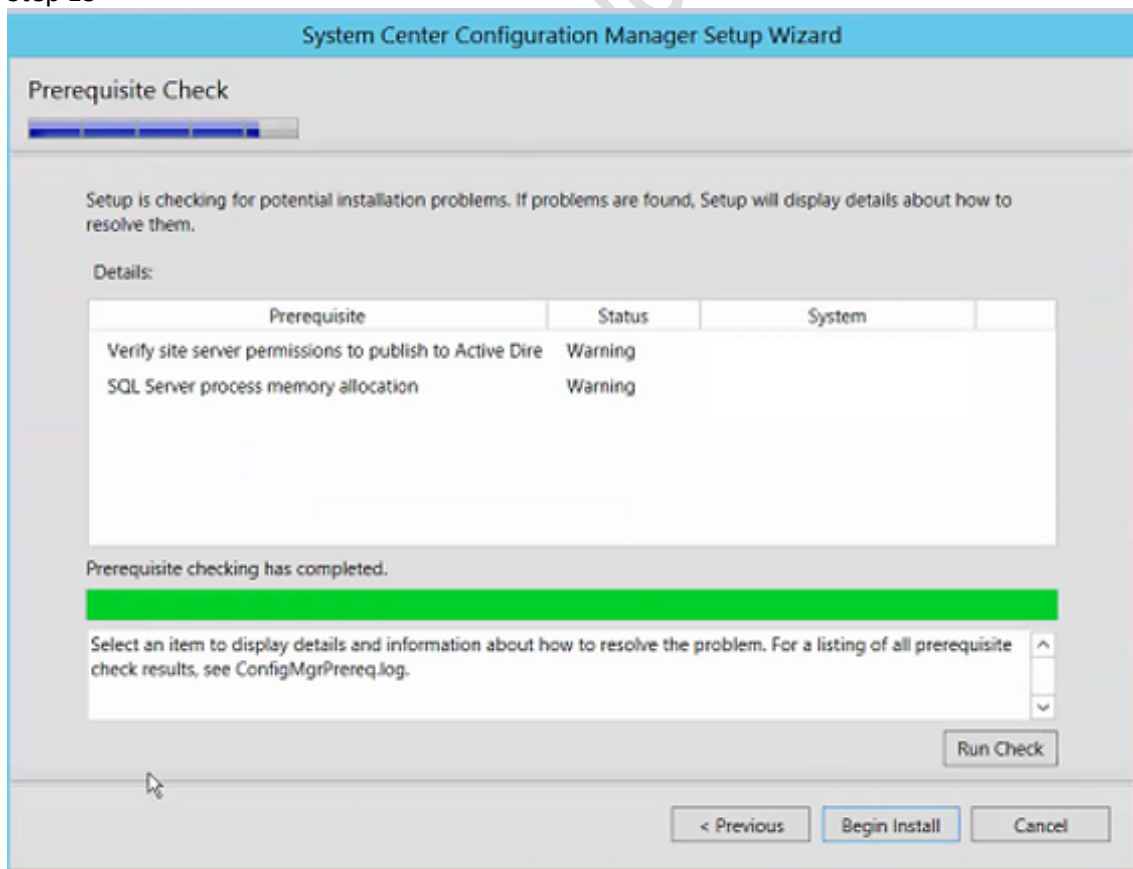
Step 11:



Step 12:



Step 13



Step 14

Configuration Manager Trace Log Tool - [C:\ConfigMgrSetup.log]

File Tools Window Help

Log Text

Log Text	Component	Date/Time	Thread
INFO: AddItem(D:\Program Files\Microsoft Configuration Manager\bin\i64\SETUP.EXE, Configur...	Configuration	Mar 7/16/2019 12:55:1	8248 (0x20)
INFO: Shortcut string is C:\ProgramData\Microsoft\Windows\Start Menu\Programs\Microsoft Syst...	Configuration	Mar 7/16/2019 12:55:1	8248 (0x20)
INFO: Failed to locate the exe path for icon Configuration Manager Documentation, skip it.	Configuration	Mar 7/16/2019 12:55:1	8248 (0x20)
INFO: Automatic Updates detection task was called - AutomaticUpdates->DetectNow returned ...	Configuration	Mar 7/16/2019 12:55:1	8248 (0x20)
INFO: SQL Connection succeeded. Connection: SMS ACCESS, Type: Secure	Configuration	Mar 7/16/2019 12:55:1	8248 (0x20)
INFO: Updating Staging\client folder...	Configuration	Mar 7/16/2019 12:55:1	8248 (0x20)
INFO: Staging\client folder already exists. No need to update.	Configuration	Mar 7/16/2019 12:55:1	8248 (0x20)
INFO: Updating Piloting\upgrade folder.	Configuration	Mar 7/16/2019 12:55:1	8248 (0x20)
INFO: Noting\upgrade folder already exists. No need to update.	Configuration	Mar 7/16/2019 12:55:1	8248 (0x20)
INFO: SQL Connection succeeded. Connection: [REDACTED] pe: S...	Configuration	Mar 7/16/2019 12:55:1	8248 (0x20)
INFO: Full Client Package already exists. Id = [REDACTED]	Configuration	Mar 7/16/2019 12:55:1	8248 (0x20)
INFO: Client Upgrade Package already exists. Id = [REDACTED]	Configuration	Mar 7/16/2019 12:55:1	8248 (0x20)
INFO: Client Upgrade Program already exists. Name = Configuration Manager Client Upgrade Pro...	Configuration	Mar 7/16/2019 12:55:1	8248 (0x20)
INFO: Client Upgrade Advertisement already exists. Id = [REDACTED]	Configuration	Mar 7/16/2019 12:55:1	8248 (0x20)
INFO: Client Upgrade Version is marked at 5.00.8692.1509	Configuration	Mar 7/16/2019 12:55:1	8248 (0x20)
Completed Configuration Manager Server Setup	Configuration	Mar 7/16/2019 12:55:1	8248 (0x20)

Time: 7/16/2019 12:55:02 PM

Component: Configuration Manager Setup

Source: [REDACTED]

Completed Configuration Manager Server Setup

System Center Configuration Manager Setup Wizard

Install

Core setup has completed

Elapsed time: 00

Installing Database Notification Monitor

Installing Site Control Manager

Installing Hierarchy Manager

Installing Inbox Manager

Installing policy provider

Installing boot image package

Configuring data replication service

Creating program group

Click Next to review the required post-recovery actions and to exit the wizard while Setup completes site re...

Step 15 Verify console its working as expected.

