

## Distribution point Reassignment

Hey Folks,

Till Now we have completed understanding on below points.

Configuration Manager Migration pre planning

Configuration Manager Migration Step by Step Guide Line

Content Source Migration of Migrated Applications and Packages

Today I will share you the some inputs on when to use Distribution point sharing and Distribution point reassignment while Running Migration Jobs between Source and Destination Hierarchy. There are a few important points to understand before we choose these one of these options. Below I will provide 2 scenarios where I will Distribution point Sharing and Distribution point Reassignment.

### Scenario 1 : Distribution point Sharing.

Once Data Migration from Source hierarchy to a destination hierarchy is completed and we have following metadata for packages, Applications etc in destination hierarchy along with the Source that we have copied to new package source in destination hierarchy. So we have almost every thing ready for Client Migration to destination migration, except for the distribution points that will serve the content to client devices. If we are planning to use the same distribution points for both source and destination hierarchy then we can enable the distribution point sharing in the destination hierarchy. Distribution points that we share must meet the prerequisites for shared distribution points.

1. To successfully share any distribution points from a source site, at least one primary site or the central administration site in the destination hierarchy must use the same port numbers for client requests as the source site. ( Client --> Distribution point ports like HTTP port 80 or HTTPS port 443) ex: If source server is using a port 80 for client to distribution point communication then we must configure port 80 for Client to distribution point communication in destination hierarchy.
2. For each source site, only the distribution points that are installed on site system servers that are configured with a FQDN can be shared.
3. To share a distribution point from source site, the **Source Site Account** (which accesses the SMS Provider for the source site server), must have **Modify** permissions to the **Site** object on the source site. You grant this permission to the account by using role-based administration. <https://docs.microsoft.com/en-us/sccm/core/understand/fundamentals-of-role-based-administration>.

Important note :

- Distribution points sharing has following limitations, while the distribution points are shared between source and destination hierarchy, We **cannot use the PXE** option both hierarchies.
- Distribution points sharing only enables the Clients in destination hierarchy to use the content that is already existing on shared Distribution point, Destination site cannot distribute any content to the shared distribution point.

## Senario 2 : Distribuion point Reassignment

We can use distribution point reassignment in system center configuration manager Migration and it can also be utilized in a senario that does not involve any Migrations or what can call as existing hierarchy example Many customers have large Configuration Manager infrastructures, and are reducing primary or secondary sites to simplify environment still retain distribution points at branch office locations to serve content to managed clients. These distribution points often contain multiple terabytes or more of content. This content is costly in terms of time and network bandwidth to distribute to these remote servers. Starting in version 1802, this feature lets you reassign a distribution point to another primary site without redistributing the content. This action updates the site system assignment while persisting all of the content on the server.

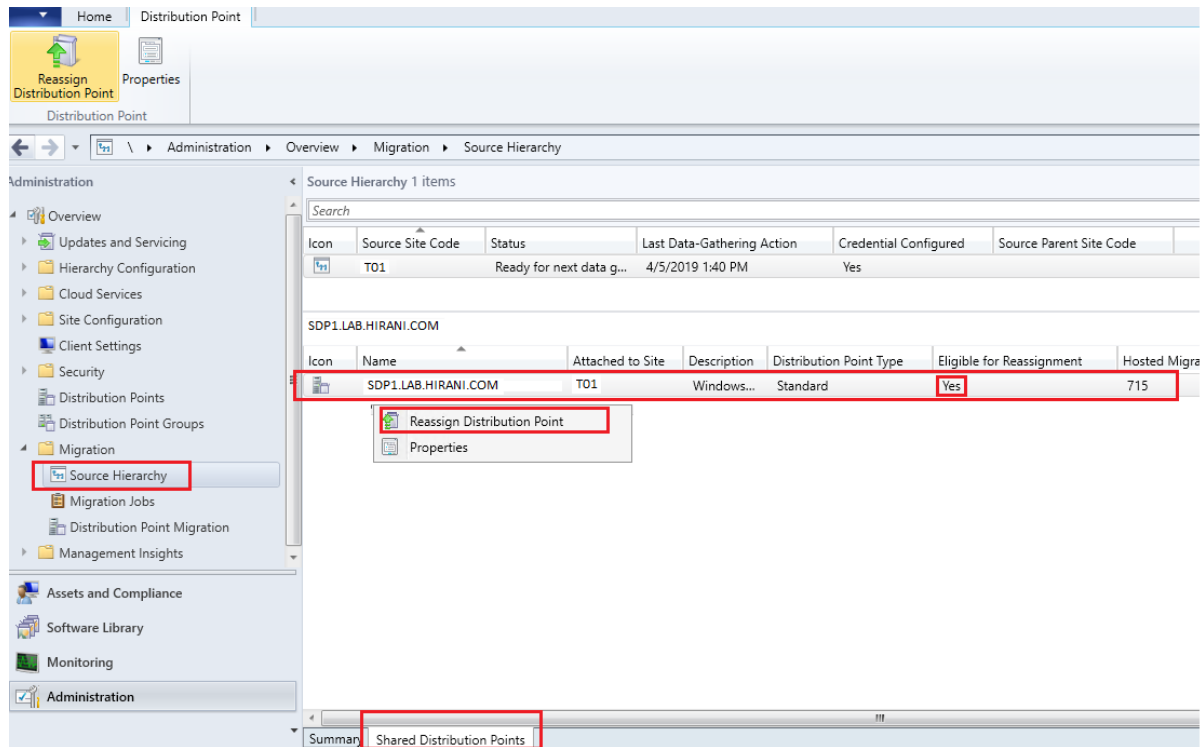
**Important Note :** The target server can only host the distribution point role. If the site system server hosts another Configuration Manager server role, such as the state migration point, you cannot reassign the distribution point. Also we cannot reassign a cloud distribution point.

Before reassigning a distribution point, add the computer account of the destination site server to the local Administrator group on the target distribution point server.

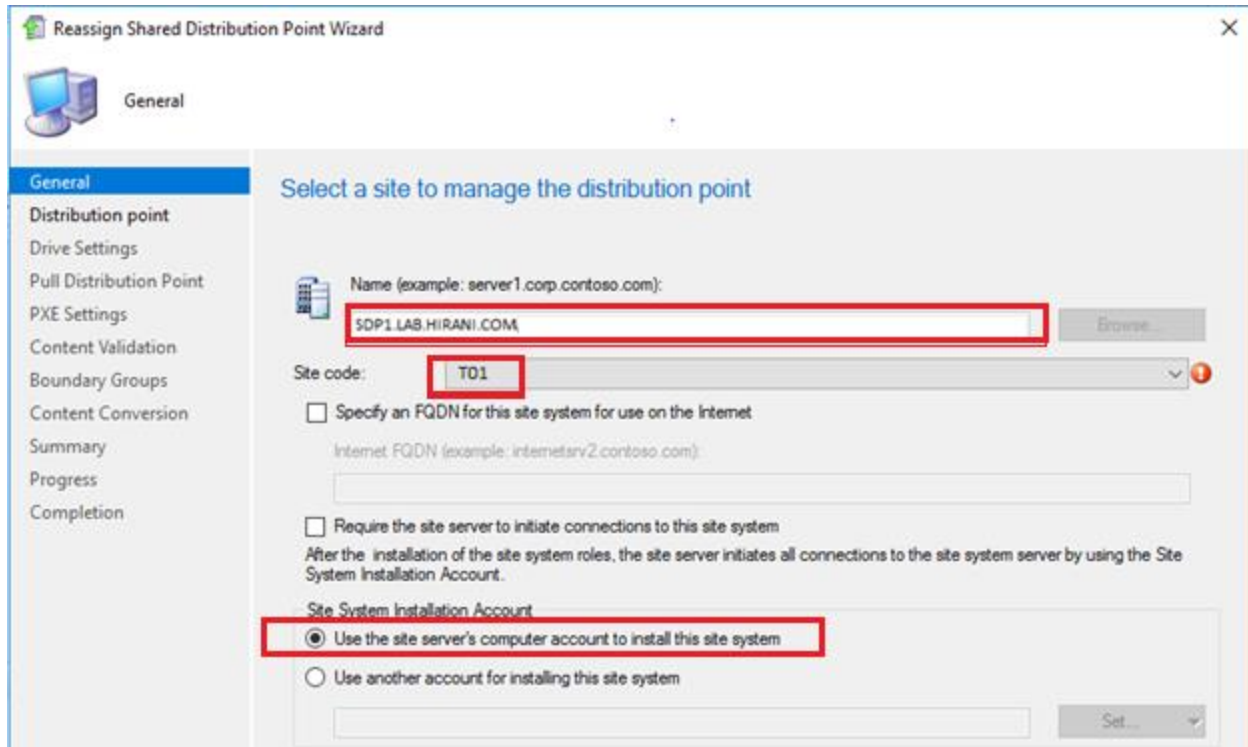
**Follow these steps to reassign a distribution point that belongs to Source site and point it to destination Hierarchy.**

Go to the **Administration** workspace and select **Migration** node and select Source Hierarchy, now go to shared distribution point tab at the bottom of the pane, here you can see list all distribution points that are available in source site also we can find the information weather the shared distribution point is eligible for reassignment or not.

Now Right click on the Distribuion point and Select the reassign distirbuion point option.



Now in the **General Tab**, Distribution point name will be populated automatically, Select the Site code for which we want the distribution point to be assigned and Select the option Use the site server's computer account to install this site system and Click on **Next**, remember that we have added the computer account of the destination site server to the local Administrator group on the target distribution point server



Now provide the description as the location name where the distribution point is physically located. Also specify how clients communicate to distribution point in the hierarchy using HTTP or HTTPS depending on your environment. Select create a self-signed certificate and click **Next**

Reassign Shared Distribution Point Wizard

Distribution point

**General**

Distribution point

Drive Settings

Pull Distribution Point

PXE Settings

Content Validation

Boundary Groups

Content Conversion

Summary

Progress

Completion

### Specify distribution point settings

A distribution point contains source files for clients to download.

Install and configure IIS if required by Configuration Manager

Enable and configure BranchCache for this distribution point

Description:

Specify how client computers or mobile devices communicate with this distribution point.

HTTP Does not support mobile devices or Mac computers.

Allow clients to connect anonymously

HTTPS Requires computers to have a valid PKI client certificate.

If you manage Mac computers or have mobile devices that are enrolled by Configuration Manager, select an option that allows Internet client connections.

Allow mobile devices to connect to this distribution point

Create a self-signed certificate or import a PKI client certificate.

Create self-signed certificate

Set expiration date:

All the values for **drive settings** will be auto populated in, Click next.

Reassign Shared Distribution Point Wizard

Drive Settings

**General**

Distribution point

**Drive Settings**

Pull Distribution Point

PXE Settings

Content Validation

Boundary Groups

Content Conversion

Summary

Progress

Completion

### Specify drive settings for this distribution point

Specify the space to reserve on each drive that is used by this distribution point. You can use drive space reserve to determine the space that remains free on the drive after content is stored on it.

Drive space reserve (MB):

The content library contains content that is distributed to this distribution point. To optimize hard disk space, the content library stores only one instance of each content files. The package share is used when you configure a package to allow clients to run a program from the distribution point.

Specify the locations for the content library and package share on this distribution point. If you select Automatic, Configuration Manager selects the drive that has the most free space when the distribution point is installed. Configuration Manager uses the secondary content library location only when insufficient space remains on the primary location.

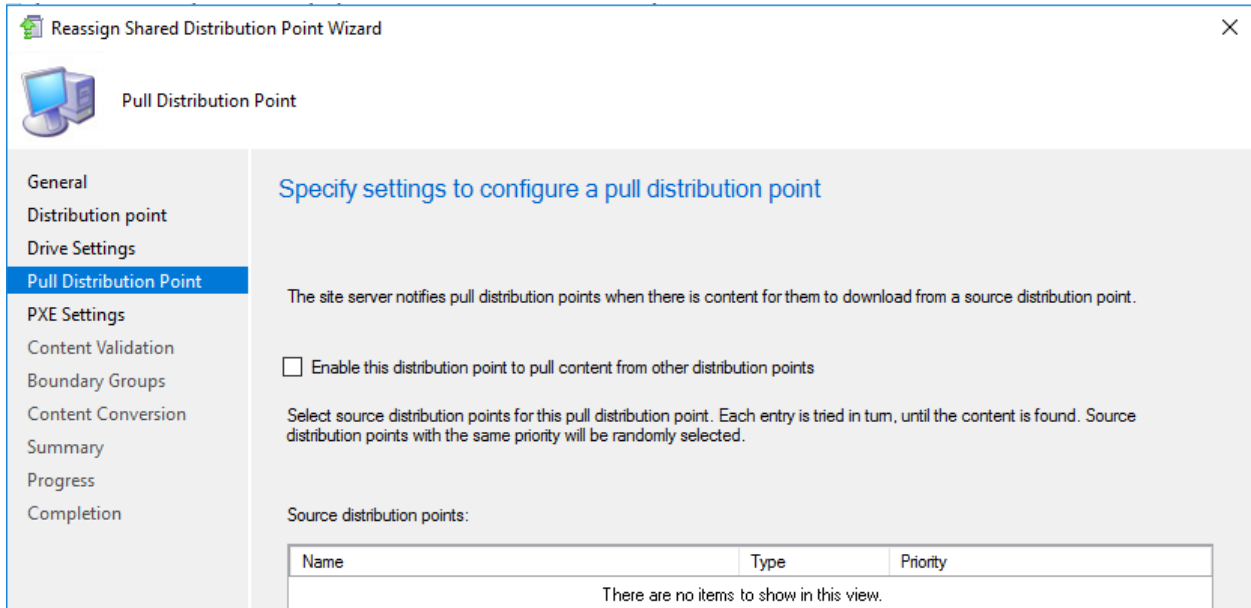
Primary content library location:

Secondary content library location:

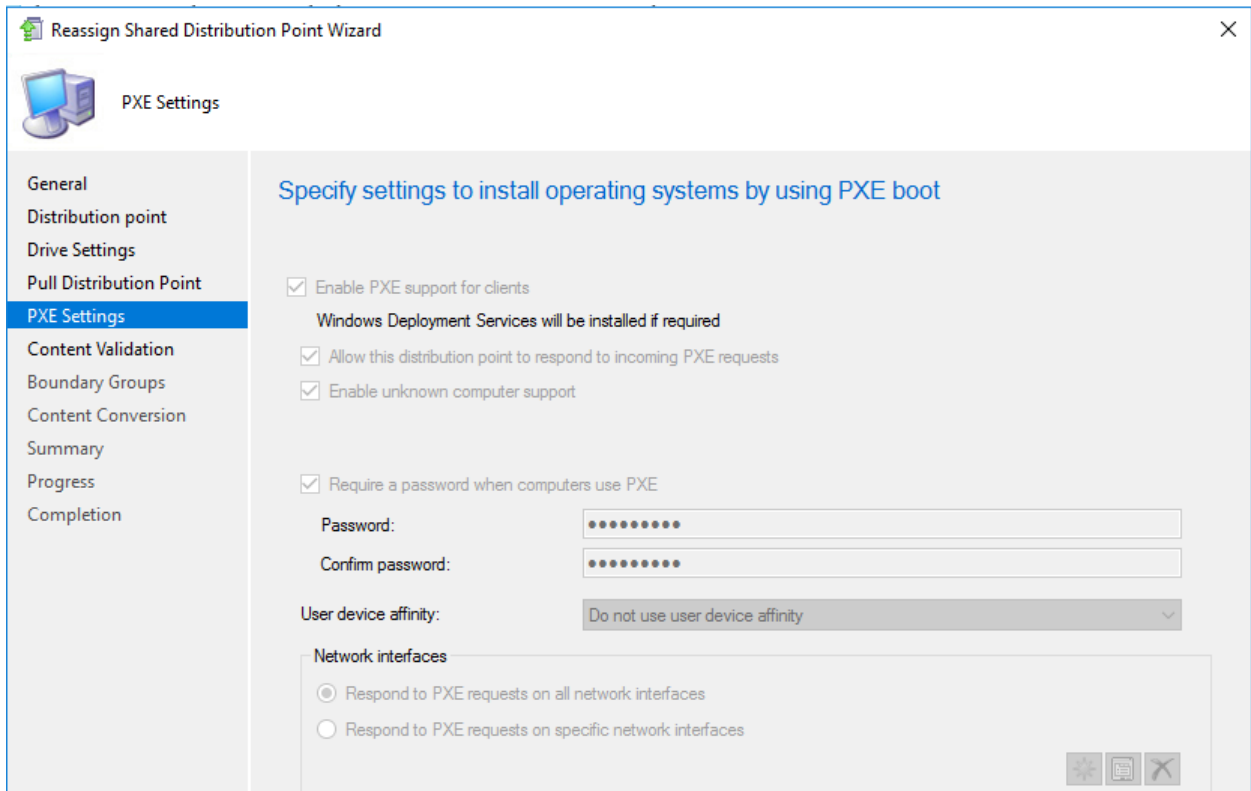
Primary package share location:

Secondary package share location:

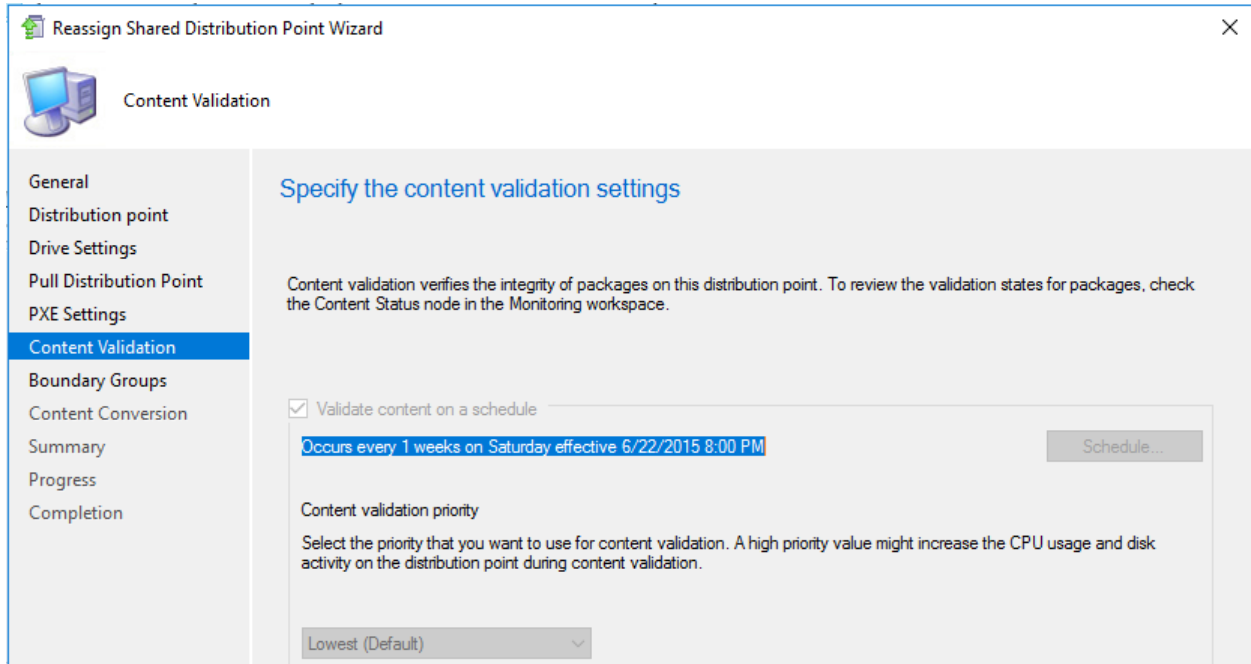
In the Pull Distribution point tab, chose weather or not to use enable this distribution point to pull the content from other distribution point. In our case we chose not to use the pull distribution point.



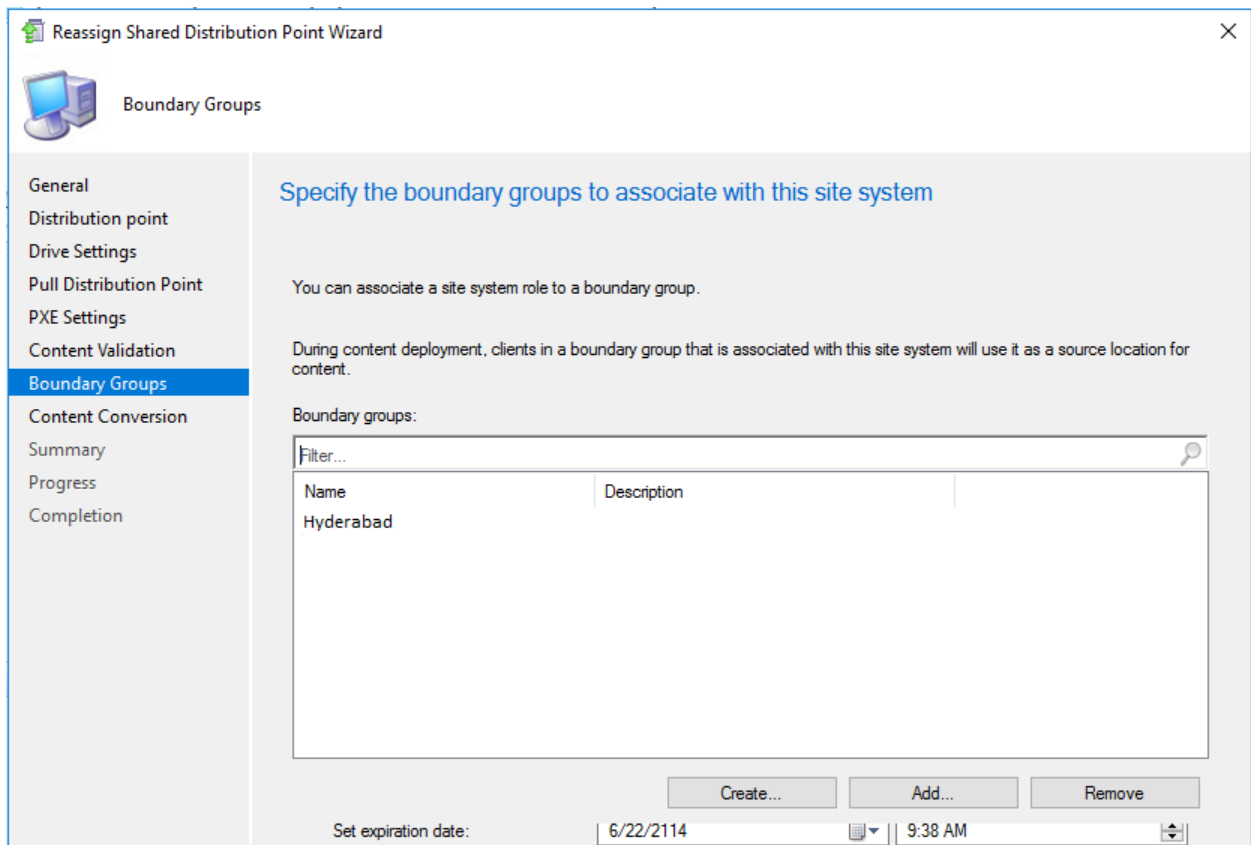
In PXE Settings Tab will be greyed out as this information is pulled from source hierarchy when data gathering job is run on destination hierarchy, So no action required here so **Click Next**



Content Validation Tab will be greyed out as this information is pulled from source hierarchy when data gathering job is run on destination hierarchy, no action required here so **Click Next**



In Boundary Groups Tab select the Boundary group that is Auto populated from the source hierarchy and **click Next**



In this Tab, we can view a list of all Migrated packages that are hosted on this distribution point that are already available in content library and need not be redistributed. Now **click Next**

The screenshot shows the 'Content Conversion' step of the 'Reassign Shared Distribution Point Wizard'. The left sidebar lists various configuration options, with 'Content Conversion' selected. The main area displays a list of migrated packages that will be preserved in the content library.

**Content Conversion**

When you reassign this distribution point, the following migrated packages that are hosted on this distribution point will be preserved in "this" version of System Center Configuration Manager content library.

Migrated packages:

Name	Type	Size (KB)
Server Standard Installation	Package	2
ConfigMgr 2012 Toolkit R2	Package	5532
SCCM 2012 R2 CU4 Installation	Package	104262
MDTToolkit2012Update1-A37	Package	48295
HPBiosConfigUtil_WinPE6.3	Package	1768
Qualcomm_WWAN_1.1.250_New	Package	53020
Reader XI	Package	172255
Receiver	Package	58187
Remote Runtime	Package	56210

Save to File...

**Click Next**

The screenshot shows the 'Summary' step of the 'Reassign Shared Distribution Point Wizard'. The left sidebar lists various configuration options, with 'Summary' selected. The main area displays a confirmation of the settings for the site system server.

**Summary**

**Confirm the settings**

Details:

**Create a site system server with the following settings:**

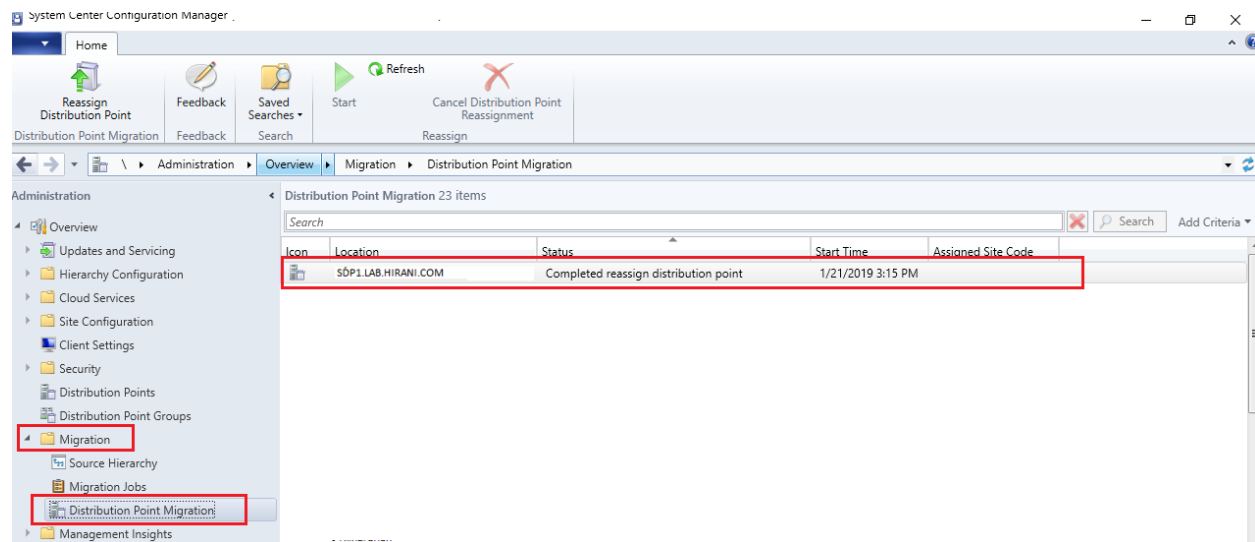
- Site System Name
  - SDP1.LAB.HIRANI.COM
- Site Code
  - T01 - Hyderabad LAB
- Roles
  - Site system: Hyderabad
  - Distribution point
  - Content pulling enabled: No
  - PXE-enabled: Yes
- System Installation Account
  - Legacy distribution point uninstallation account: HIRANI\SVC\_SCCM Migration
  - Distribution point installation account: NT AUTHORITY\SYSTEM
- Settings
  - Public FQDN: Not specified
  - Installation Account: Computer Account
- Boundary Settings
- Boundary Groups
  - Hyderabad

view the summary of all the settings that we have selected and **Click next**, Distribution point reassignment task will run background, wait for the reassignment to be completed.



You can view the Reassignment task status in Administration workspace, Migration node under **Distribution Point Migration**

Note: Reassignment task will take a few hours to complete depending on the total number of packages that are available on the distribution point.



With this we come to end of Distribution point reassignment in System center configuration manager Migration scenario.

After successful reassignment of distribution point, you can view the reassigned distribution point in Administration workspace under Distribution points node. Following which you may Add this distribution point to Distribution point group to make sure that new packages that are available in destination hierarchy and that are not part of source hierarchy will be distributed.

Now that we have completed reassignment point, I will cover how to troubleshoot the package mismatch and content refresh that is required to fix the issues that are commonly encountered after the reassignment of distribuend point in Migration.

Thank you hope this has been informative. Your feedback will be valuable so please leave your comments so that we can improve on a few areas and help you better.

Happy Learning 😊

**What Next Keep watching hiraniconfigmgr.com space with more details?** 

**This Document is copy rights by hiraniconfigmr.com. You cannot copy, you can use this document can used for reference purpose. I am sure this will help you to increase knowledge.**

Thanks & Regards,

Haresh Hirani

**Email:** [hiraniconfigmgr@outlook.com](mailto:hiraniconfigmgr@outlook.com)

**Follow me:** Twitter @hirravi1

**LinkedIn:** <https://www.linkedin.com/in/hiraniconfigmgr>

**Facebook:** <https://www.facebook.com/Hiraniconfigmgr-120189361980772/>